

## 19 Ways Metal Consumer Unit with T2 SPD and 80A 30mA RCD

- 22 module full metal enclosure
- 19 ways RCD incomer
- 80A 30mA Type A RCCB
- T2 20-40kA SPD
- Include tail clamp for incoming live and neutral tails



### General information

Mounting method	Surface mounted
Number of modules	22
Number of available modules	19
Number of rows	1
Barcode (EAN-13)	5060690135579

### Technical information

Standard	BS EN 61439-3
Number of phases	Single phase
Rated current ( $I_{nA}$ )	[ A ] 100
Rated operational voltage ( $U_e$ )	[ V ] 230
Type of current	AC
Frequency ( $f$ )	[ Hz ] 50
Rated insulation voltage ( $U_i$ )	[ V ] 500
Rated impulse withstand voltage ( $U_{imp}$ )	[ kV ] 4
Rated short-time withstand current ( $I_{cw}$ )	[ kA ] 10
Rated conditional short-circuit current ( $I_{cc}$ )	[ kA ] 16
Overvoltage category	III
Pollution degree	2
Location type	Indoor
Altitude	[ Meter ] < 2000
<b>Ambient air temperature for operation</b>	
• Minimum	[ °C ] -5
• Maximum	[ °C ] +40
<b>Ambient air temperature for storage</b>	
• Minimum	[ °C ] -40
• Maximum	[ °C ] +75
Degree of protection (IP)	IP2XC
Degree of protection (IK)	IK07

### Danson Electrical UK Limited.

Enclosure material	Steel
Surface finish	Powder paint
Colour	Fresh white
RAL colour number	9016
<b>Information for incomer device</b>	
Type	Residual current circuit breaker (RCCB)
Standard	BS EN 61008-1
Product code	E-DR2124
Rated current ( $I_n$ ) [ A ]	80
Number of poles	2P
Neutral position	Neutral right
Wave form of residual current	Type A
Rated residual operating current ( $I_{\Delta n}$ ) [ mA ]	30
Residual current protection time delay	General type without time-delay
Rated conditional short-circuit current ( $I_{nc}$ ) [ kA ]	6
Rated conditional residual short-circuit current ( $I_{\Delta c}$ ) [ kA ]	6
<b>Information for surge protection</b>	
Surge protection	Yes
Standard	BS EN 61643-11
Product code	DSCY251N2R
Test class	II
Network configuration	1P+N (1+1)
Maximum continuous operating voltage ( $U_c$ ) [ V ]	275
Norminal discharge current (8/20 $\mu$ s) ( $I_n$ ) [ kA ]	20
Maximum discharge current (8/20 $\mu$ s) ( $I_{max}$ ) [ kA ]	40
Voltage protection level ( $U_p$ ) [ kV ]	< 1.3 (L-N) , < 1.5 (N-PE)
Response time [ ns ]	< 25
Maximum backup fuse [ A ]	125 gL
Integrated with remote indication contact	Yes

## Connection information

	Connection capacity [ mm <sup>2</sup> ]	Torque [ N.m ]
Terminal bar	16	1.7
Main switch	50	2.5
RCCB	35	2.5
SPD	16	2
Cover screws	/	2

## Package information

Package level 1		
Type		Box
Number of units in package level 1 [ pcs ]		1
Weight [ kg ]		4.97

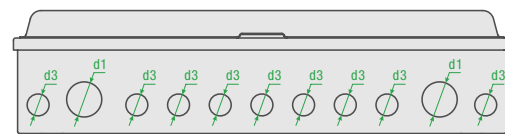
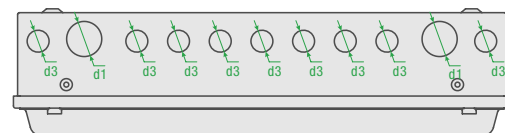
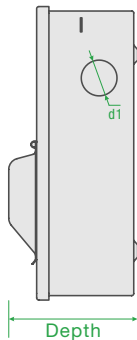
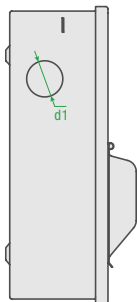
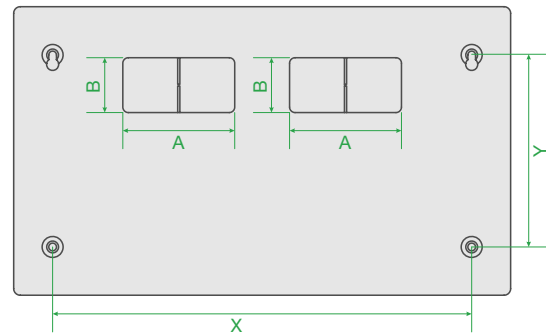
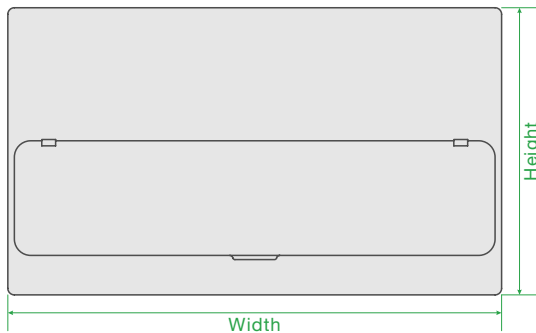
# E-MR223/SPD1

Length	[ cm ]	45.64
Width	[ cm ]	26.97
Height	[ cm ]	12.83
<b>Package level 2</b>		
Type		Pallet
Number of units in package level 2	[ pcs ]	80
Weight	[ kg ]	412.6
Length	[ cm ]	120
Width	[ cm ]	100
Height	[ cm ]	125

## Knock-outs & dimensions

		Top face	Bottom face	Left side	Right side	Rear face
d1 = 32 mm	○	2	2	1	1	-
d2 = 25 mm	○	-	-	-	-	-
d3 = 20 mm	○	9	9	-	-	-
A = 40 mm, B = 30 mm	□	-	-	-	-	-
A = 104 mm, B = 52 mm	□	-	-	-	-	2

Width	Height	Depth	X hole	Y hole	Weight
[ mm ]	[ mm ]	[ mm ]	[ mm ]	[ mm ]	[ kg ]
451.4	264.7	123.2	382	175	4.64



## Certificate

---

